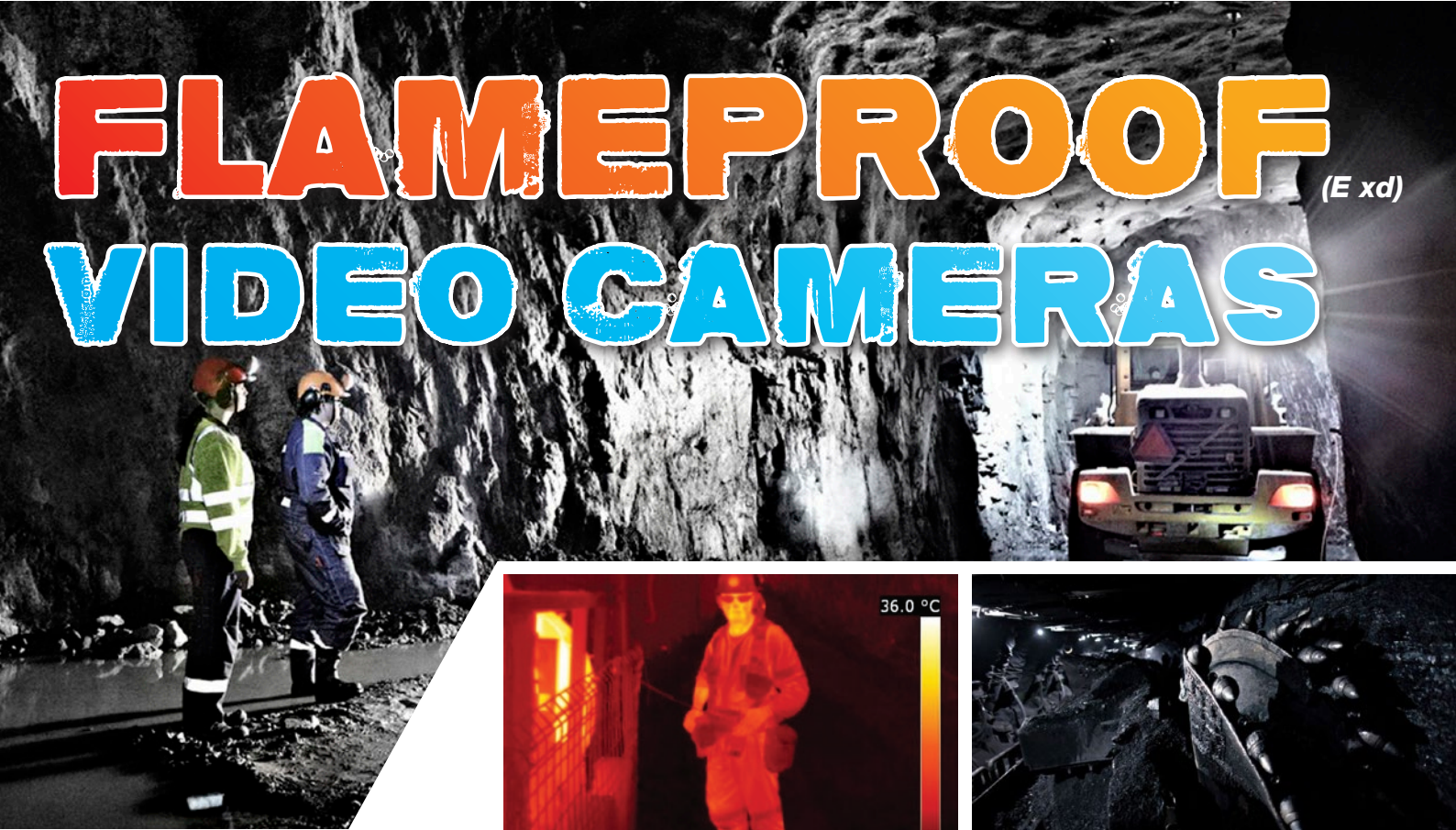


FLAMEPROOF VIDEO CAMERAS (E xd)



Thermal Camera



HD Camera



EXTREMECAMHD™
by Nautitech



EXTREMECAMHD™ *BRITE*
by Nautitech



EXTREMECAM™ *THERMAL*
by Nautitech

SPECIFICATIONS AND APPROVALS

IECEX: IECEX ITA 12.0007X



ATEX: FM13ATEX0088X

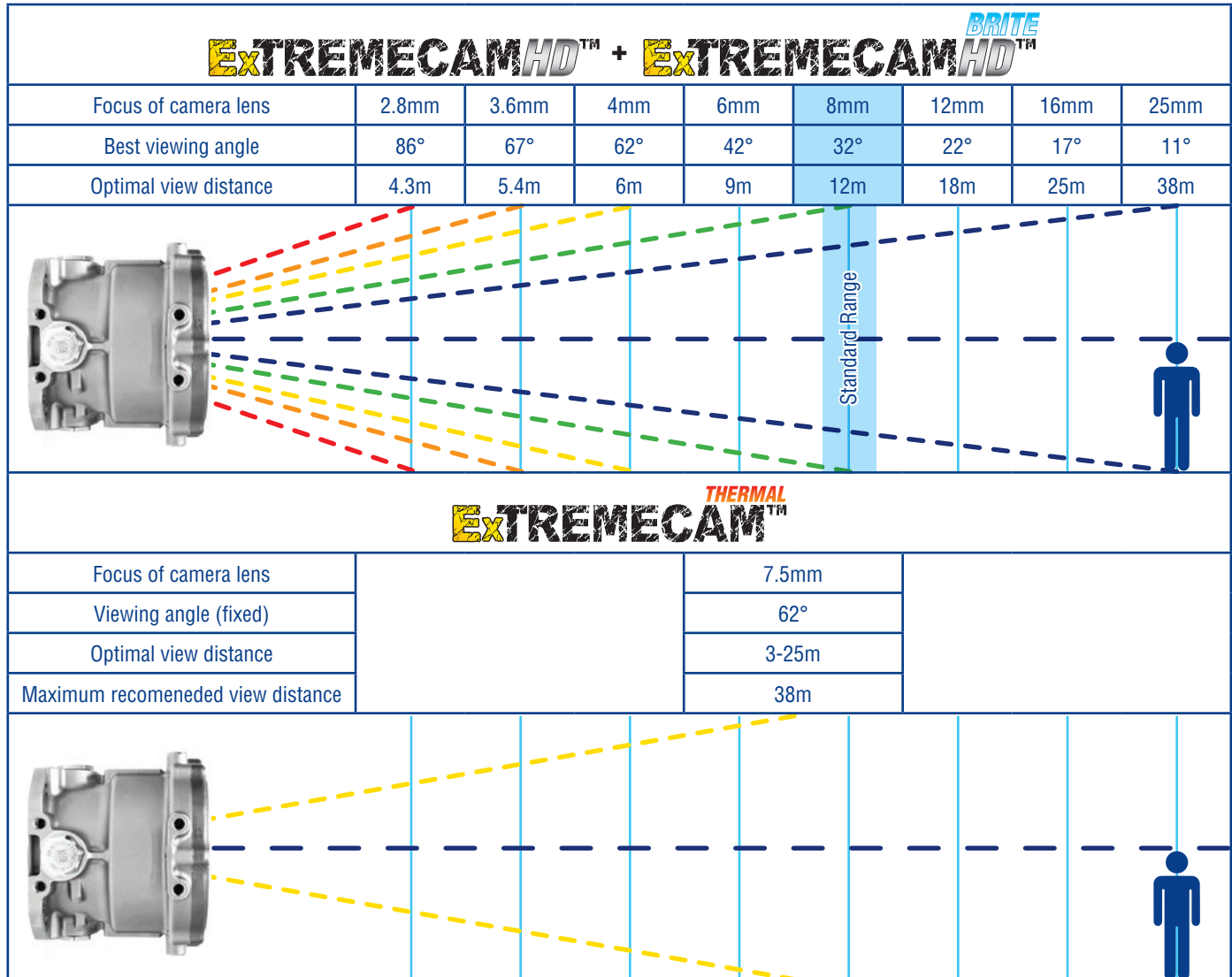


MASC: MASC MS/14-0066X



SPECIFICATIONS

Performance



Electrical

- ✓ Supply voltage = 12V - 24V AC/DC
- ✓ Power <= 9.5W ExTREMECAM HD BRITE
- ✓ Power <= 4.5W ExTREMECAM HD & ExTREMECAM THERMAL

Environmental

Operating temperature	-40°C to +60°C External temperature
Storage temperature	-55°C to +95°C External temperature
Shock	50G – 3Axis
Bump	15G – 3Axis
Vibration	Random Vibration 3 Axis (7Hz-500Hz)
Humidity	5 – 95% non-condensing

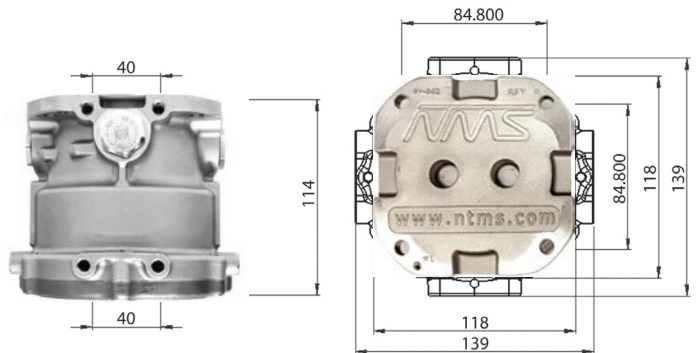
IEC 60068-2-6 - Sinusoidal Resonance
 MIL-STD810G - Random Vibration
 IEC 60068-2-27 – Bump and Shock Test

SPECIFICATIONS

Physical

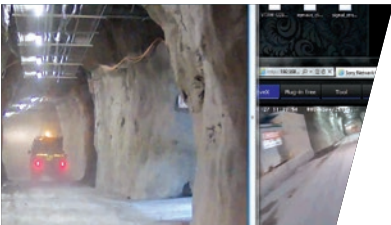
- ✓ Robust 316 S/S enclosure
- ✓ IP66 (Ingress Protection rating)
- ✓ Multiple rear and side gland entries
- ✓ Australian designed, certified and assembled

Please contact Nautitech regarding cable specifications for your unique application.



APPLICATIONS

Extremecam HD™



Ideally suited to mobile machines such as a shuttle car, loader, grader, man transporter or shearer carrier. Can be used as a reversing camera, tow hitch camera, or to gain visibility of any aspect around the machine.

Extremecam HD™ BRITE



All the features of the ExtREME CAM HD plus 4 built-in LED globes for direct illumination of the area in front of the video camera. Especially useful for when you upgrade your existing headlights from incandescent to LED globes, or if your machine does not yet have lights fitted.

Extremecam™ THERMAL

Nautitech's latest camera innovation. Thermal cameras detect heat instead of light, the advantage of this is a clearer display of people machines, cables and other relatively warm objects in areas that are in darkness, dust, heat or steam.

Also ideally suited to:

Mobile machines such as a shuttle car, loader, grader, man transporter or shearer carrier. Can be used in conjunction with mobile machines that have proximity detection systems fitted in order to add an important visual element to the system.



Conveyor belt / FCT monitoring:

- Checking for hot rollers
- Checking for uneven belt loading
- Monitoring for issues at transfer points
- Boot end temperature monitoring

General monitoring of any industrial equipment especially if it can become concealed in fog, dust, steam or darkness.



DISPLAY OPTIONS



10" Display

Large display (Non Ex)

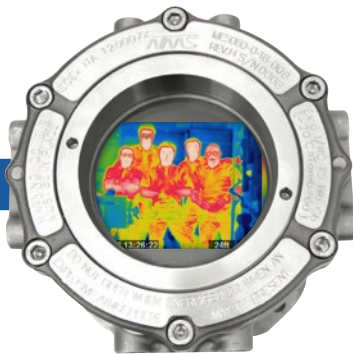
- 10" / 25cm (diagonal) HD display (13.5cm x 21.5cm)
- Up to 8 IP camera inputs
- Up to 4 simultaneous splits (4-way split screen)
- PiP (Picture-in-Picture)
- Universal voltage (10-36V AC/DC)



7" Display

Medium display (Non Ex)

- 7" / 18.2cm (diagonal) HD display (10cm x 15.5cm)
- Up to 8 IP camera inputs
- Up to 4 simultaneous splits (4-way split screen)
- PiP (Picture-in-Picture)
- Universal voltage (10-36V AC/DC)



3.5" Display

Standard display (Ex d)

- 3.5" / 8.9cm (diagonal) display
- (7.3cm x 5.6cm)
- Up to 2 analogue inputs
- Universal voltage (10-36V AC/DC)